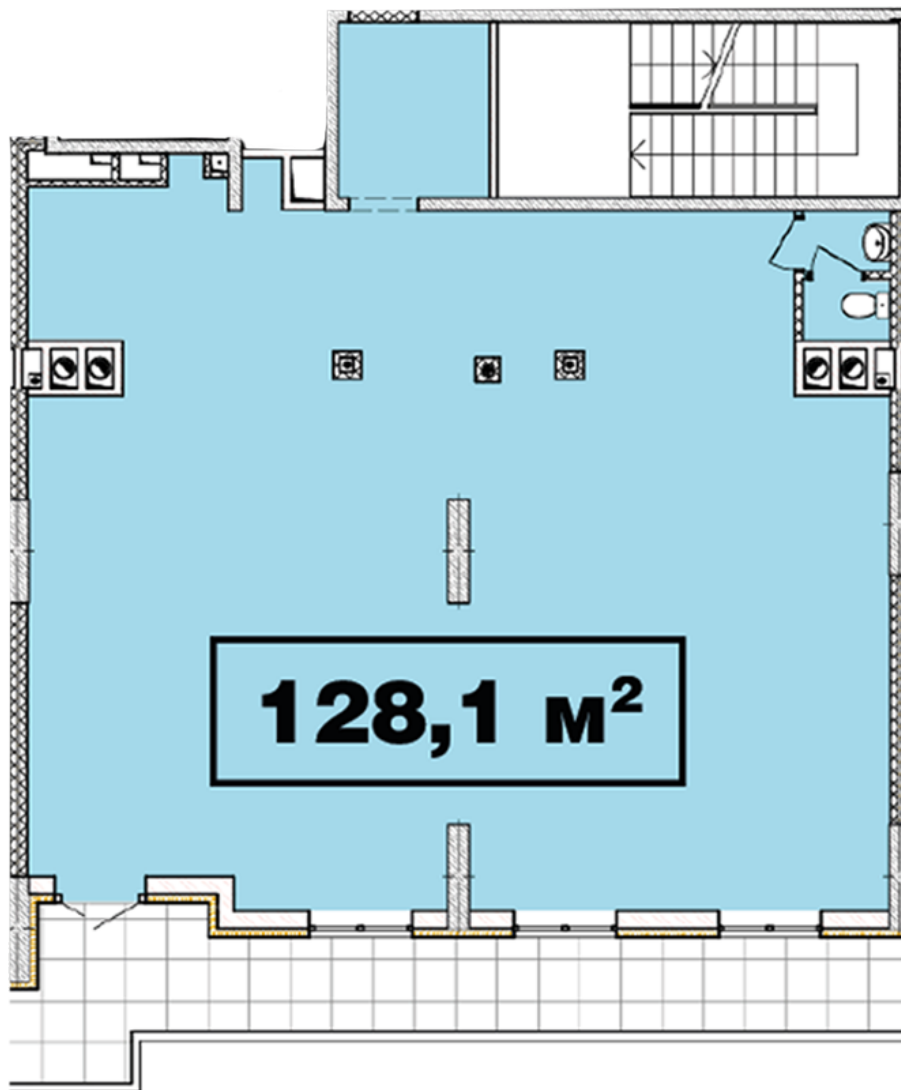


# RC "Crystal Avenue"

crystal-avenue.com.ua

096 023 03 10

## Commercial premises plan in the house on the Krysh taleva St., 1-B — #2.4



## **PLAN TYPE: №2.4**

House Cryshtaleva St., 1-B  
0 roomed, 2 Floor

### **Characteristics**

Gross area: 128.1 m<sup>2</sup>